

# Der mangler 2 bogstaver

## læg alle kortene på gulv

Udskriv – laminér med løsningen nedad (dobbeltsidet)

Lad børnene arbejde sammen parvis og skrive svarene på et stykke  
papir –vend til sidst alle kortene

Hvor mange rigtige har hvert par fået?

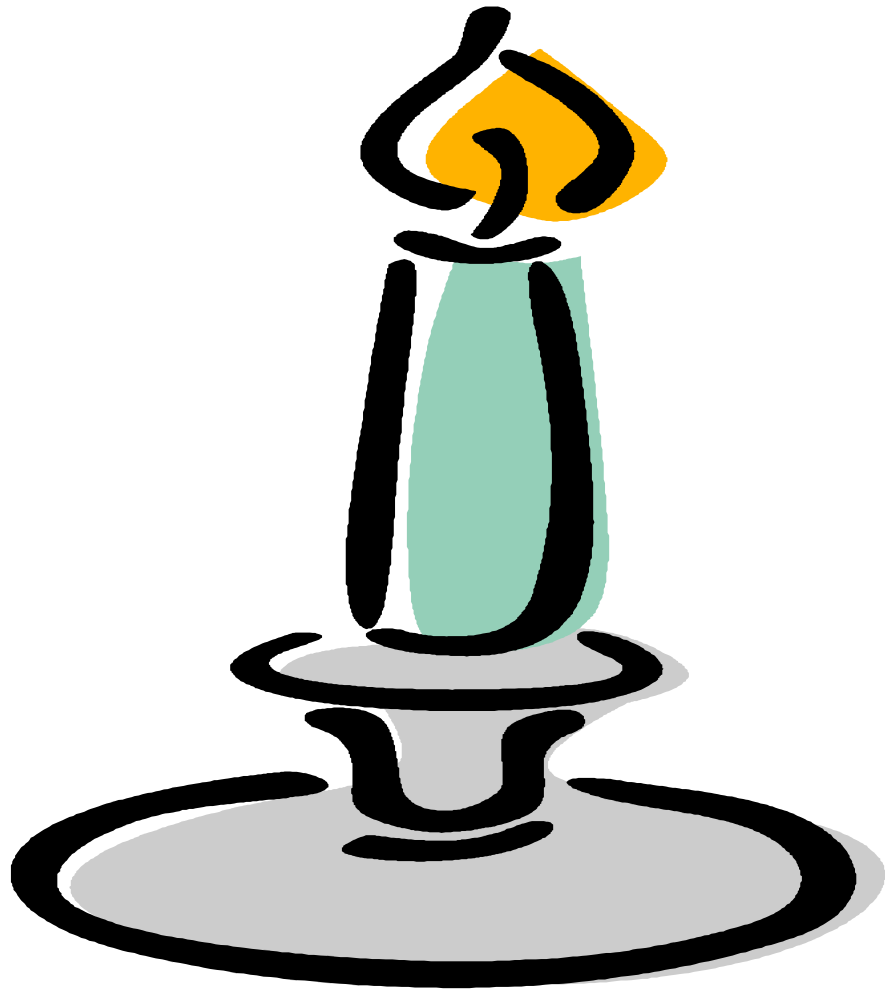


H \_ \_

opgave



HUS



L \_ \_



LYS



SKO



S

— —



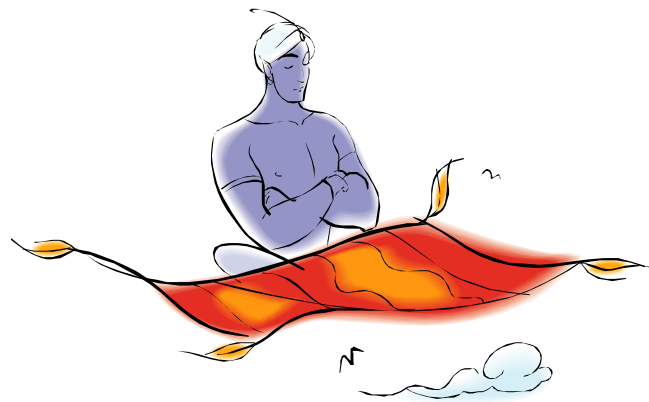
A \_ \_



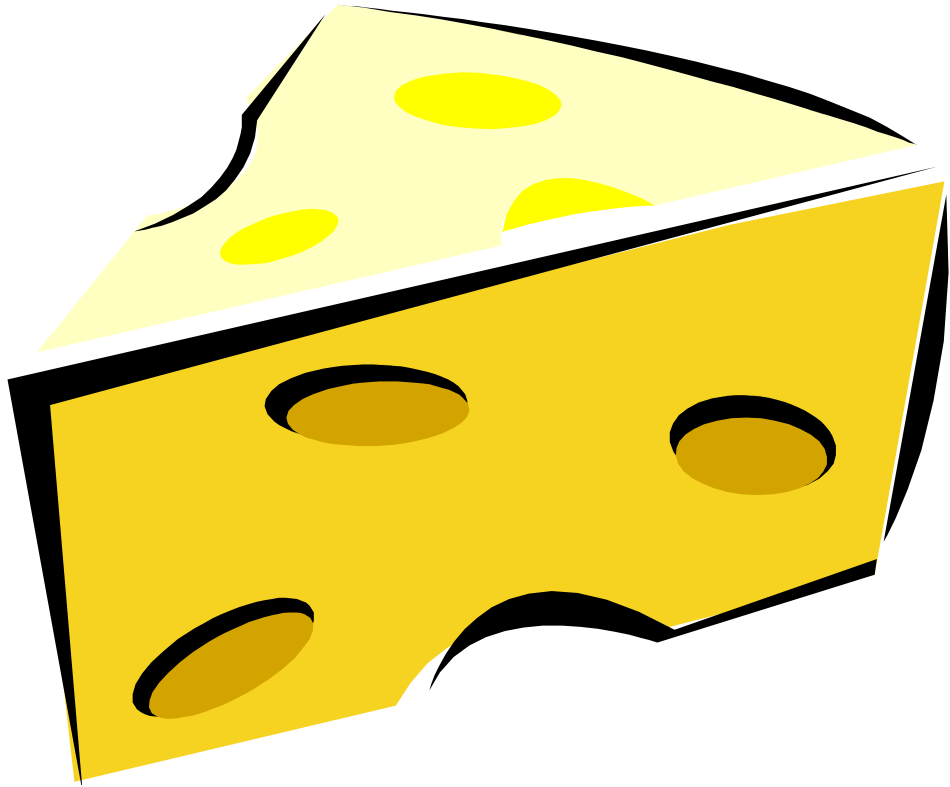


ABE



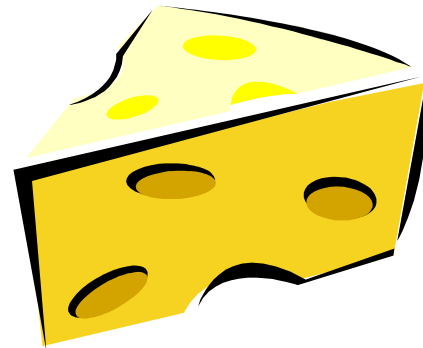


ÅND

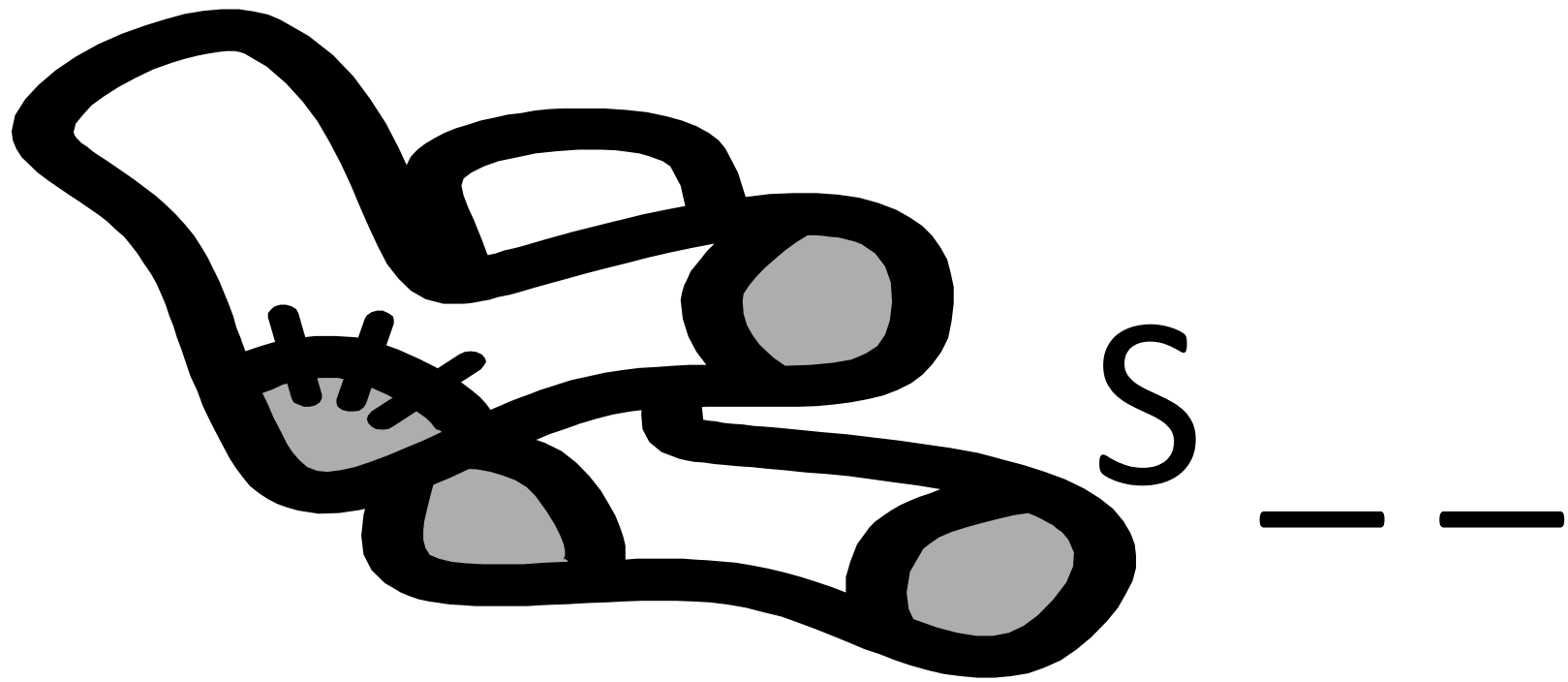


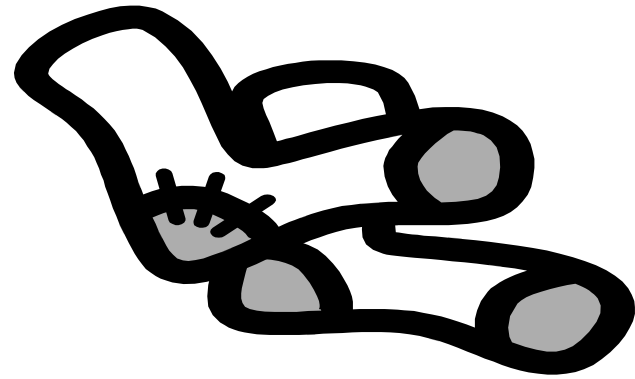
0

--

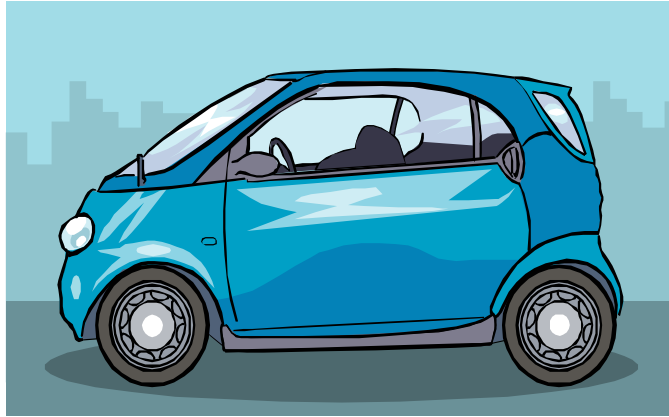


OST





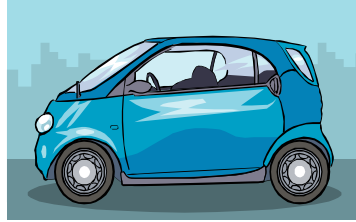
SOK



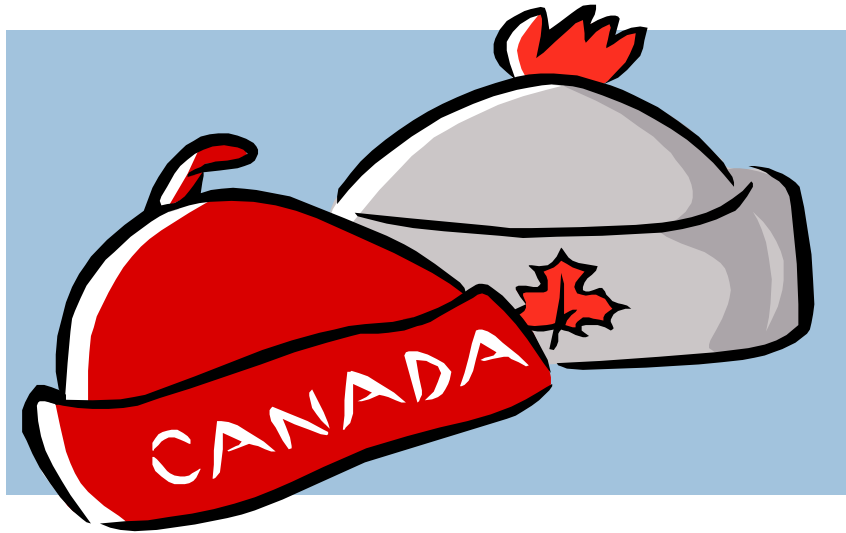
B

— —





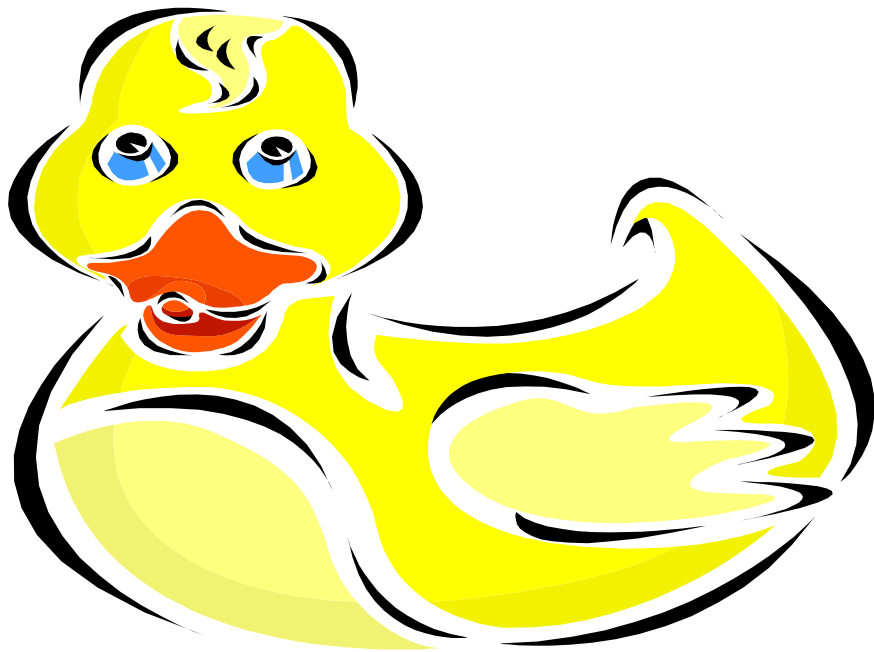
**BIL**



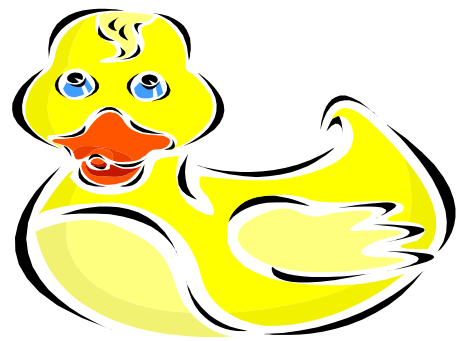
H \_ \_



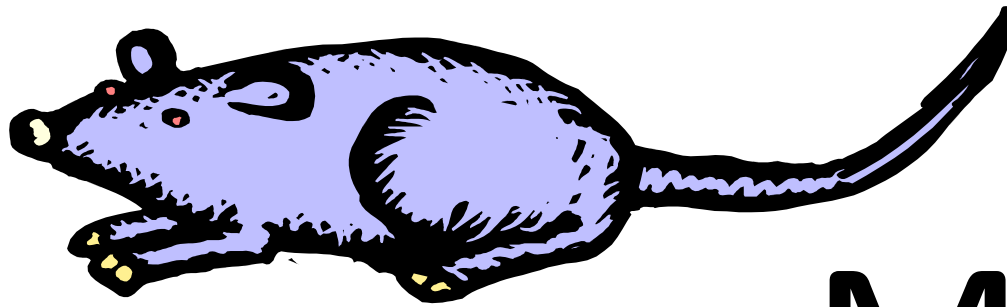
HUE



A \_ \_

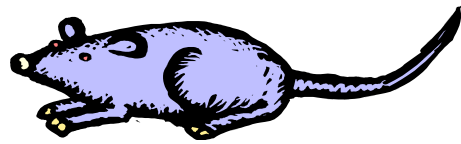


AND

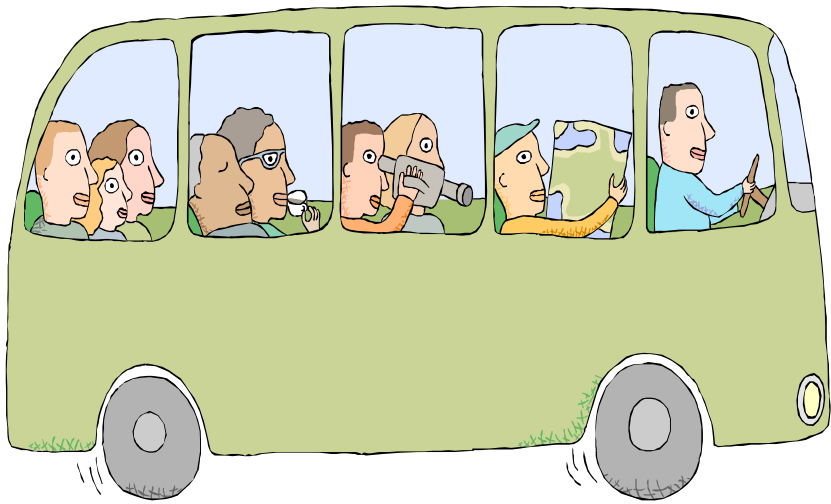


M

— —



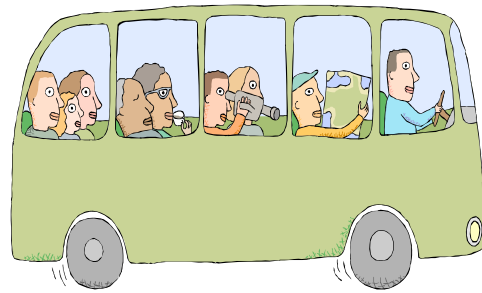
MUS



**B**

— —





**BUS**